

# 2023-25 Operating and Capital Budget Requests

Legislative Districts: **11, 32, 33, 34, 36, 37, 43, 46**

## Overview

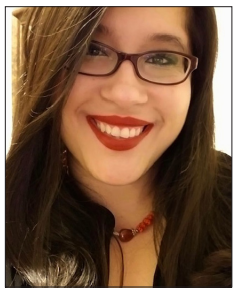
Founded in 1969, South Seattle College is located on an 87-acre hilltop campus in West Seattle with panoramic views of the city skyline and surrounding mountains. South serves students with diverse needs to meet their educational and career goals, whether they are just starting their higher education, looking to advance their careers, or trying a new direction. We also offer apprenticeship training at our Georgetown campus. With our affordable and accessible programs, South Seattle College helps people of every age and background thrive in today’s economy.



**SOUTH SEATTLE  
COLLEGE**



## Meet Rebecca Silva



Rebecca Silva, a 2022 All-Washington Academic Team Scholar, is studying psychology and sociology to earn her associate degree. She plans to transfer to University of Washington to complete a bachelor’s degree in psychology and work with domestic violence victims and LGBTQIA+ community members. She also plans to earn a Master of Legal Studies to resolve and mediate court cases. During the pandemic, Rebecca volunteered to

help stroke victims. She is inspired by her collective vow with her sisters to fulfill their mother’s wish by becoming intelligent and independent women guided by empathetic leadership.

## Legislative Priority: Expand Opportunity for Students and Employers

Fully funding our budget requests will have real returns for students like Rebecca Silva and for the communities and employers in our area. Students will learn from competitively-paid experts who choose to work at South Seattle College rather than pursue higher paying positions with private employers or K-12 schools. Our students will train for careers in robust workforce programs, with modern equipment and learning spaces that mirror their future work environments. We will be able to expand technology to bring a college education to more people in more ways, which is especially important for working adults. And, all our students will benefit from an inclusive environment where they are valued, supported and equipped to reach their goals.

South Seattle College will also receive funding to operate and maintain existing facilities and to design and build both its Rainier Hall renovation and its Georgetown Campus, Building B.

## Our Students

Total headcount.....	8,892
Total full-time equivalent (FTE).....	3,776
Full-time .....	35%
Part-time .....	65%
Students of color.....	54%

## Operating Budget Estimate

If the system’s operating budget request of \$353 million is fully funded, the Seattle Colleges will receive approximately \$19.6 million in additional funding.

## Capital Budget Estimate

If the system’s request is fully funded, South Seattle College will receive approximately \$6,561,600 for operation, maintenance, infrastructure, repairs and minor improvements of its existing facilities, \$47,916,000 for design and construction of the Rainier Hall renovation, and \$23,648,000 for design and construction of the Georgetown Campus, Building B.

